



FOR LEASE | ±2,350 SF of Medical or Professional Office Space

MILLS PROFESSIONAL CENTER

16 Mills Avenue Greenville, South Carolina 29605

SCOTT SNEDIGAR

864.444.4814

ssnedigar@wilsonkibler.com

GIVENS STEWART, SIOR

864.350.3345

gstewart@wilsonkibler.com



420 The Parkway Suite K, Greer, SC 29650 |
www.wilsonkibler.com

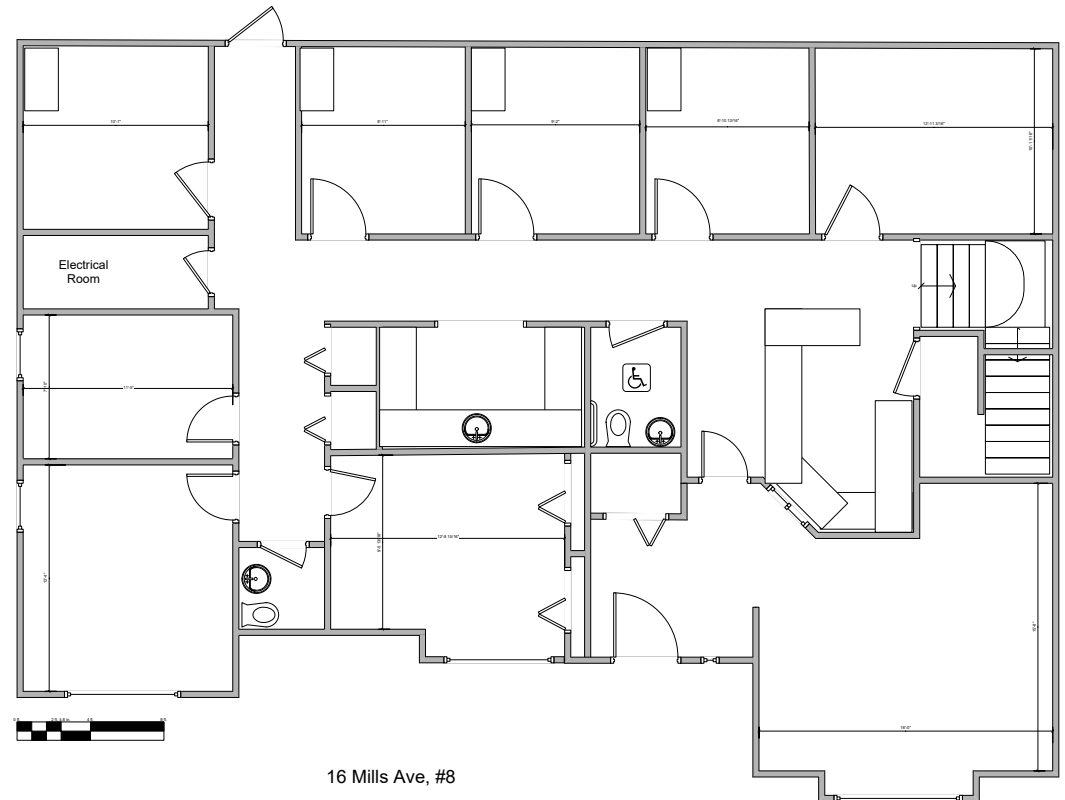
THE INFORMATION CONTAINED HEREIN HAS BEEN GIVEN TO US BY THE OWNER OF THE PROPERTY OR OTHER SOURCES WE DEEM RELIABLE. WE HAVE NO REASON TO DOUBT ITS ACCURACY, BUT WE DO NOT GUARANTEE IT. ALL INFORMATION SHOULD BE VERIFIED PRIOR TO PURCHASE OR LEASE.

MILLS PROFESSIONAL CENTER

Building 8, 16 Mills Avenue, Greenville, South Carolina 29605

FOR LEASE

- ±2,350 SF For Lease
- Asking rate is \$11.00 SF NNN(\$3.79/SF)
- Located in Mills Professional Center
- Large conference area
- Lobby area with reception desk, and waiting room
- Professional office or medical use
- Kitchenette area
- Updated finishes throughout
- Offices located on 1st floor with additional office space upstairs
- Convenient to downtown Greenville, Prisma Health, Shriners Hospital for Children
- On-site Pull-up parking
- Located at the intersection of Mills Ave, Augusta St., and S Church St.



Lease Rate: \$11.00 PSF NNN